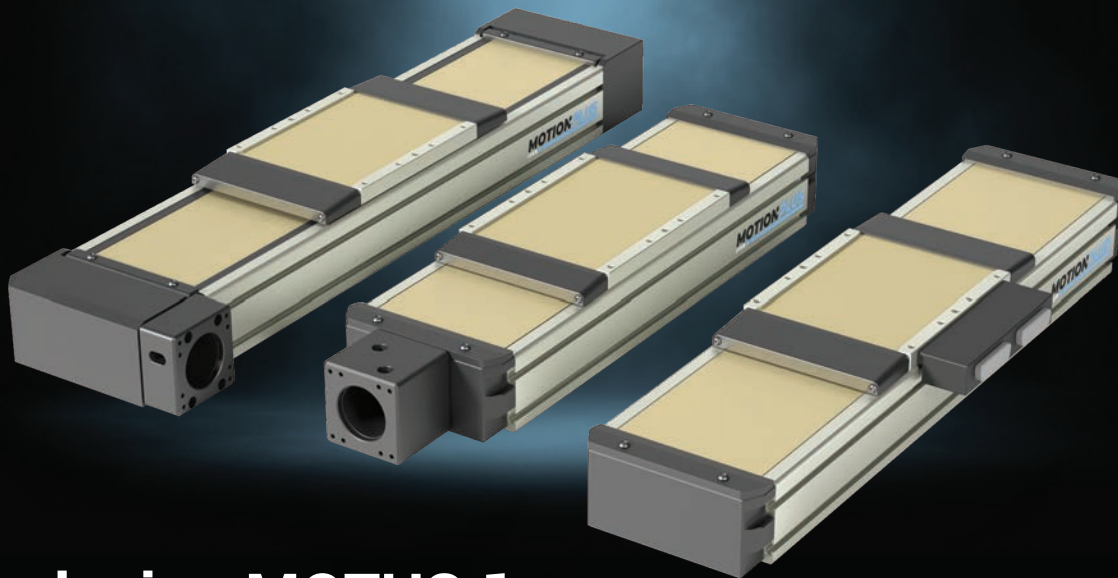




MAKING IT EASY FOR THE WORLD TO AUTOMATE



IN STOCK  
SOLUTIONS



## Introducing MOTUS 1

**Designed to Maximize Performance & Flexibility.**

Three frame sizes, three drive trains and highly configurable with in-stock solutions that ship as soon as two days.



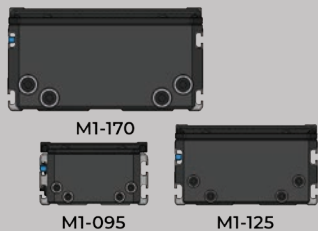
Motion Plus, LLC  
610 Epsilon Dr.  
Pittsburgh, PA 15238  
1-866-MOTION+  
1-866-668-4660

◆ [www.motionplusmore.com](http://www.motionplusmore.com)

# MOTUS 1

The **Motus 1** family of heavy-duty, high-performance stages from **Motion Plus** provides the perfect mix of flexibility and functionality, manufactured at industry-leading lead times. With three different frame sizes and three drive train options, this suite of electric linear actuators provides machine builders, OEM's and end-users alike the ability to maximize speed, load capacity, and precision with a multitude of options to optimize each.

The lightweight aluminum base comes in three frame sizes ranging from 95mm to 170mm wide and the dual square rail-guided design provides a very robust package for high load industrial applications. The integrated seal strip creates a high level of protection for internal components enabling **Motus 1** to be utilized in harsh environments. **Motus 1** stages can be configured with belt, ball screw or linear motor (*coming soon*) drive trains, to match performance to your needs.



## THREE FRAME SIZES

Widths of 95mm, 125mm and 170mm, and payload capacity up to 2500lbs!



## THREE DRIVE TRAINS

Ball screw, belt drive or linear motor allow you to achieve high speed, high thrust & high accuracy!



## IN STOCK SOLUTIONS

Select a pre-configured solution available to ship in 2-3 days, or configure your own to fit your needs.



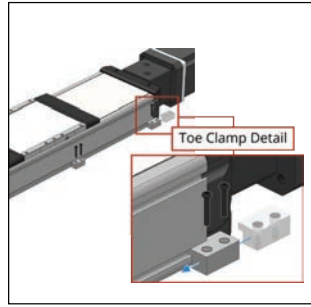
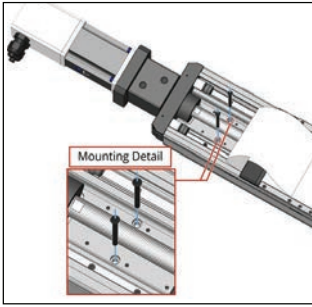
## HIGHLY CONFIGURABLE

From incremental travels to mounts for your motor, there are literally thousands of options to maximize flexibility.

## MOTORS INCLUDED OR MOUNT YOUR OWN

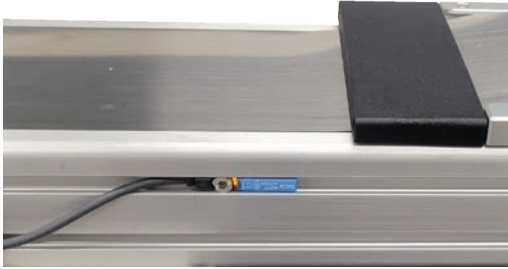


We offer a wider range of configurable servo and stepper motors that can be mounted directly on the stage. Different motor frame sizes, encoder options, and brakes make finding the right motor for your application a cinch. But, if you have a different motor you would prefer to use, we offer a variety of motor flanges to fit many industry standard motor mounting faces.



## MOUNTING MADE EASY

Multiple options are offered for mounting the **Motus 1** stage to a surface. You can use the counterbored holes through the base to bolt down from the top, or you can mount via the t-slots on the side using a toe-clamp. Mounting contingencies for end effector or easy stage to stage mounting are designed in to the carriage as well.

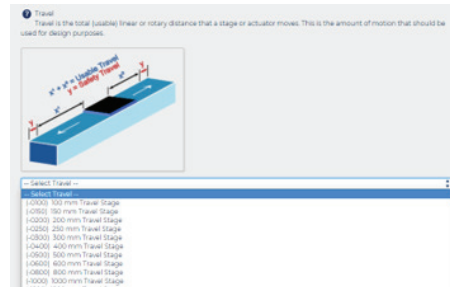


## LIMIT AND HOME SENSORS

Whether you need PNP or NPN, or need 1, 2, or 3 home/limit options, configure what you need for your application.

## TRAVEL TO FIT YOUR APPLICATION

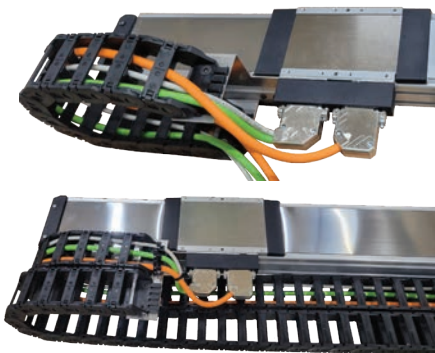
The **Motus 1** gives you the freedom to configure your stage to whatever travel length you need. Pick from any of the pre-configured travel or in-stock stages, configure your own, or contact **Motion Plus** to request a custom length to fit your application.



## IMPROVING ACCURACY & REPEATABILITY

If you are looking to further enhance the performance of a **Motus 1** stage, we offer configurable options for linear encoders, which will increase positional accuracy and repeatability of the system.

## CABLE MANAGEMENT



If you are building a multi-axis system or just mounting your **Motus 1** stage into a moving configuration you may need to protect and support motor/feedback and end effector cables. The **Motus 1** line has pre-designed and configurable cable management solutions to fit your needs.

## ORDER TODAY AT

[www.motionplusmore.com](http://www.motionplusmore.com)



Screw Driven	M1-095	M1-125	M1-170
Width (mm)	95	125	170
Height (mm)	55	70	90
Max Travel (mm)	1000	1500	2000
Max Payload* (Lb(N))	337 (1,500)	630 (2,800)	1,888 (8,400)
Max Thrust* (Lb(N))	148 (660)	283 (1,260)	396 (1,760)
Max Speed (mm/s)	530	390	310
Repeatability (µm) E1	100	100	100
E2	15	15	25

\* Life at 100 million inches of travel

Belt Driven	M1-095	M1-125	M1-170
Width (mm)	95	125	170
Height (mm)	55	70	90
Max Travel* (mm)	2000	2000	2000
Max Payload** (Lb(N))	337 (1,500)	630 (2,800)	1,888 (8,400)
Max Thrust** (Lb(N))	75 (335)	150 (670)	540 (2,400)
Max Speed (mm/s)	3800	5000	5000
Repeatability (µm) E1	300	300	300
E2	15	25	25

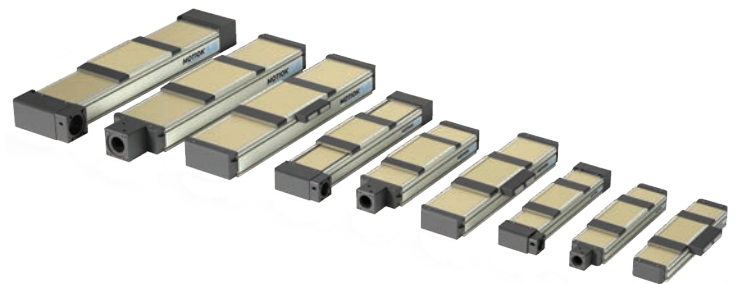
\* Consult Motion Plus for longer travels

\*\* Life at 100 million inches of travel

Linear Motor	M1-095	M1-125	M1-170
Width (mm)	95	125	170
Height (mm)	55	70	90
Max Travel* (mm)	2000	2000	2000
Max Payload** (Lb(N))	<b>COMING SOON</b>		
Max Thrust** (Lb(N))			
Max Speed (mm/s)			
Repeatability (µm) E1			
E2			

\* Consult Motion Plus for longer travels

\*\* Life at 100 million inches of travel



MAKING IT EASY FOR THE WORLD TO AUTOMATE



Motion Plus, LLC  
 610 Epsilon Dr.  
 Pittsburgh, PA 15238  
 1-866-MOTION+  
 1-866-668-4660

[www.motionplusmore.com](http://www.motionplusmore.com)